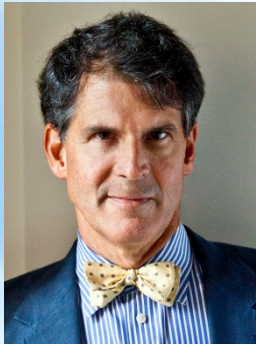




Eternea
The Convergence of
Science & Spirituality

Engendering an optimal future for earth and its inhabitants by advancing “a substantially new manner of thinking” that merges the timeless wisdom of humanity’s greatest spiritual thinking underlying the world’s major religions with the latest findings from frontier science

Eternea's Founders & Executive Management



Eben Alexander III, M.D.
Chief Science Officer

John R. Audette, M.S.
President & CEO



Gary Schwartz, Ph.D.
Chairman



Dr. Steven Jarecki
Vice-Chairman



Needed: “A Substantially New Way of Thinking”

- Change perceptions of who we are and why we are here:
 - From prevailing cultural beliefs where:
 - Physical reality is commonly accepted as all that exists
 - Many individuals are motivated by self-interest
 - Materialism and consumption dominate human activity
 - Many of the world’s leading institutions are in crisis and decline
 - Political
 - Economic
 - Religious
 - The dominant scientific model is increasingly
 - under challenge
 - falls short in understanding the role of consciousness and its relationship to reality

Towards a New Way of Thinking

- Change perceptions of who we are and why we are here:
 - To a globally accepted paradigm that embraces the following seven statements:
 1. A core aspect of consciousness extends beyond the brain
 2. This aspect of consciousness is eternal and unbounded by space and time
 3. All things in the cosmos are interconnected and influence each other instantaneously
 4. The organizing principle of the universe is unconditional love
 5. A profound creative intelligence underlies the existence of all things
 6. Cause and effect relationships exists between all things:
 - what we do to others we do to ourselves
 7. The good of the one and the good of the many are symbiotic

Why Eternea Endorses these Statements

- Spiritual wisdom of the ages
- Recent advances in science
 - Quantum physics
 - Consciousness studies
 - Cosmology
 - Biology
- Spiritually Transformative Experiences (STEs)
- Non-Local manifestations of consciousness

Spirituality and Religion Compared

- Spirituality
 - Recognition that all of creation has aspects of both
 - All manner of matter and energy
 - Something profound and metaphysical that transcends matter, energy and understanding
 - Spirituality is an attempt to comprehend that aspect of reality currently beyond our senses and instrumentation
- Religion
 - A set of principles followed and practiced by a community of people
 - Based on adherence to a faith set down by an authority figure
 - Claims ultimate and incontrovertible knowledge of the cosmos

Spiritually Transformative Experience

- A transcendent experience inexplicable by materialist science
- Associated with profound characteristic changes in
 - Knowledge
 - Behavior
 - Personality
- Usually caused by a profound event
 - Immersion into a vastly expansive vivid and lucid reality
- Causes a fundamental shift in world view including
 - Shifts in beliefs
 - Values
 - Priorities
 - Appreciation for life
- Aftermath often results in dramatic and positive transformations in personality

Eternea's Strategy

- Award managed grants
 - Prominent scientists, researchers and physicians at prestigious institutions
- Test and challenge the veracity of the seven postulates
- Educate humanity about what is already known regarding
 - STEs
 - Non-local consciousness (Both manifestations & mechanisms)
- Foster greater cooperation, collaboration and synergy in pursuit of truth between
 - Frontier science
 - Spirituality
 - Religion
- To be the change we want to see in the world
 - Sponsoring practical outreach programs (LEO & LIA)
- To offer individuals training in safe methods about having
 - Direct interactive connections with various STEs
 - Non local consciousness

Eternea's Frontier Science Approach

- Focused and adequately funded research
- Goal is to bring about profound changes in humanity
 - Perceptual
 - Behavioral
 - Social
- Sponsored research into mechanisms and manifestations of
 - Spiritually transformative experiences (STEs)
 - Non-local consciousness
- Synergistically combine research findings with core teachings of the world's timeless spiritual teachings
- End result will trigger sweeping change in basic human nature and a sustainable future for humanity.

Strategic Research Areas

- STEs
 - Manifestations
 - After-Death Communications
 - Divine Entities Encounter
 - Mystical Experience
 - Nearing-Death Awareness
 - Near-Death Experiences
 - Orb Encounters
 - Out-of-Body Experiences
 - Past Life Recall
 - Shared-Death Experiences
 - Induction Techniques
 - Transformative Effects
 - Alternative Explanations
- Non-local Consciousness
 - Manifestations
 - Spontaneous healings
 - Exceptional capabilities
 - Mediumship
 - Precognitions & premonitions
 - Psychic phenomena
 - Mechanisms
 - Consciousness primitives
 - Fundamental aspects
 - Aspects of higher consciousness
 - Theories of consciousness

Indicators of Long Term Success

- Degree to which Eternea's efforts inspire a critical mass of people to change their perceptions of reality leading to a decline in:
 - War and violence
 - Hunger and malnutrition
 - Poverty and despair
 - Illiteracy and ignorance
 - Environmental degradation
 - Gender and racial inequality
 - Human and animal abuse
 - Religious conflict and divisiveness
 - Political oppression
 - Greed and exploitation of others
 - Substance abuse and addiction
 - Suicide & clinical depression

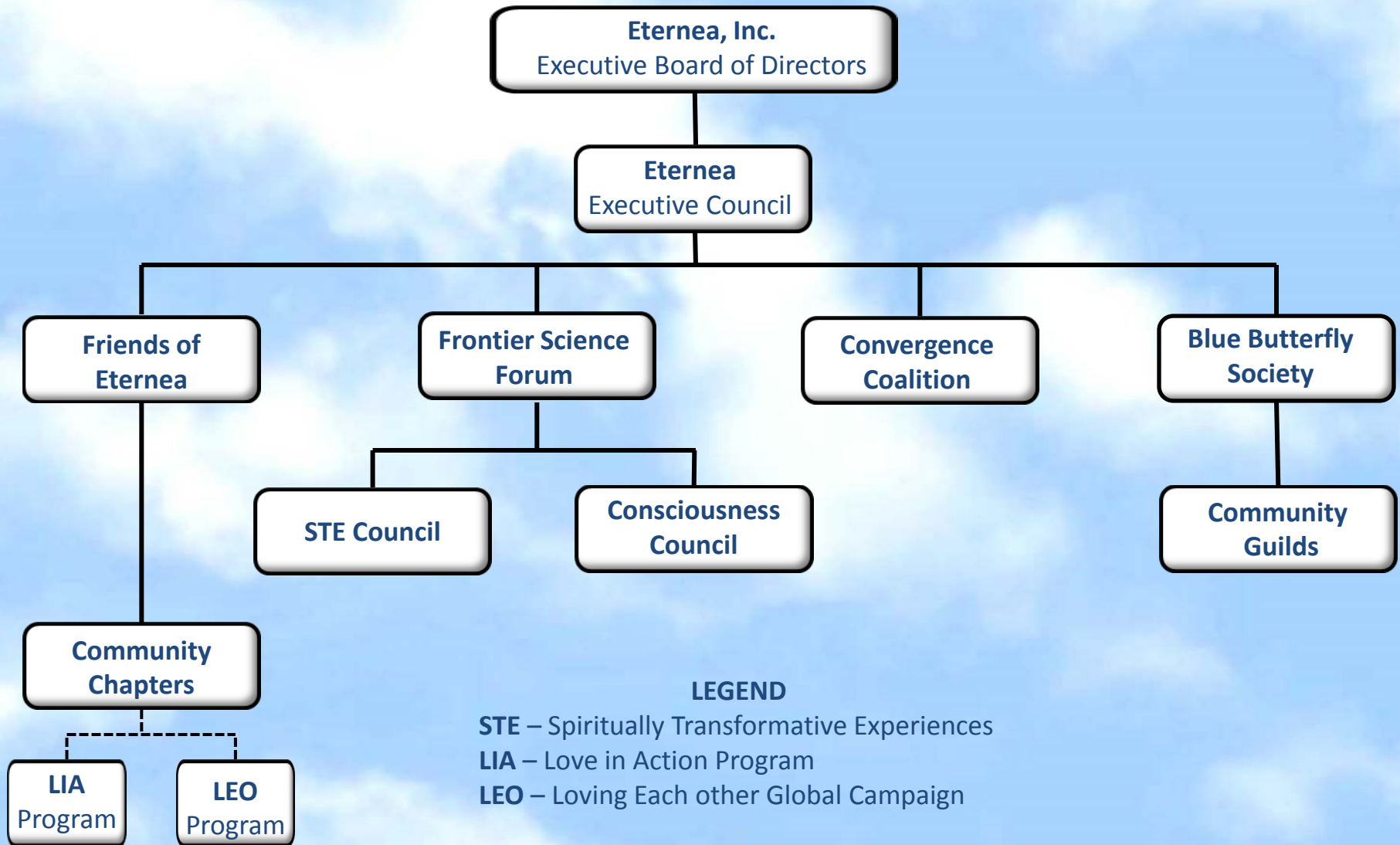
Eternea's International Programs

- Promotes research to test and challenge the seven postulates:
 - Manage grant awards to the best scientific minds for research on
 - Spiritually Transformative Experiences(STEs) and their effects on human behavior
 - The nature of consciousness & the nature of reality
- Provides education to inform the public:
 - Website
 - Books, DVDs, audio & videos
 - Seminars, workshops, conferences, etc.
 - Mass media support & advertising campaigns
 - Film production
- Promotes convergence of spiritual principles with the latest findings of frontier science:
 - Foster collaboration and cooperation between science & spirituality
 - Bolster traditional religious faith with empirical findings from frontier science
 - Enhance pursuit of truth through a synergistic convergence of shared wisdom
- Supports outreach programs to influence and affect humanity in a positive manner:
 - LEO
 - LIA
- Resources to provide instruction on safe and practical methods to achieve direct interactive and experiential connection with STEs and non-local consciousness

Long Term Plan (as resources permit)

- Establish centers for rejuvenation, empowerment, attunement, transformation, oneness & resonance
- Sponsor annual sacred music & performing arts festivals
- Establish a “Hall of Exemplars” to honor past, and present highly evolved human beings:
 - Mystics
 - Avatars
 - Saints
 - Sages
- Develop self-sufficient green communities with organic farming

Eternea Organizational Structure Overview





Eternea
The Convergence of
Science & Spirituality

Engendering an optimal future for earth and its inhabitants by advancing “a substantially new manner of thinking” that merges the timeless wisdom of humanity’s greatest spiritual thinking underlying the world’s major religions with the latest findings from frontier science